

## TRENUTNO PODRŽANI PROIZVOĐAČI BRODSKIH MOTORA

- CATERPILLAR - CFMOTO - CRUSADER ENGINES - CUMMINS MARINE -
- CUMMINS MERCURISER DIESEL - DAEDONG - DAF MARINE - FNM MARINE -
- FORD MARINE - FPT ( Fiat Powertrain Technologies ) - HYUNDAI SEASALL -
- ILMOR - INDMAR - LOMBARDINI MARINE - MAN MARINE - MERCURISER -
- MERCURY DIESEL - MERCURY RACING - MTU - PCM MARINE ENGINES -
- PERKINS - SEA DOO ( BRP ) - SISU - STEYR MOTORS - VM MOTORI -
- VOLKSWAGEN MARINE - VOLVO PENTA - YANMAR -

## TRENUTNO PODRŽANI PROIZVOĐAČI VANBRODSKIH MOTORA

- EVINRUDE - HONDA MARINE - JOHNSON - MARINER - MERCURY - MERCURY RACING -
- SELVA MARINE - SUZUKI MARINE - TOHATSU OUTBOARDS - YAMAHA MARINE -

## TRENUTNO PODRŽANI INDUSTRIJSKI MOTORI I GENERATORI

- KOHLER - MTU - VOLVO PENTA -

## TRENUTNO PODRŽANI PROIZVOĐAČI PWC

- HONDA MARINE - KAWASAKI MARINE - SEA DOO ( BRP ) - YAMAHA MARINE -

### STANDARDNI SET KABLOVA MARINE - S04990

- 3902358 - MARINE main cable (AM01)
- 3903008 - MARINE CAN cable (AM01 CAN)
- 3902407 - MARINE HONDA/TOHATSU (PGM-FI) cable (AM02)
- 3902247 - MARINE MERCURY and MARINER Group 2 pin cable (AM04)
- 3902250 - MARINE MERCURY and MARINER Group 4 pin cable (AM05)
- 3902413 - MARINE YAMAHA/SELVA MARINE cable (AM06)
- 3902414 - MARINE VOLVO PENTA 6 pin cable (AM07)
- 3902467 - MARINE VOLVO PENTA KAD-TAMD cable (AM09)
- 3902865 - MARINE EVINRUDE cable (AM13)
- 3902907 - MARINE 10 pin VOLVO, MERCURISER, CRUSADER, PCM (MEFI-1,2,3,4,4B) cable (AM14)
- 3902960 - MARINE VOLVO, MERCURISER, CRUSADER, ILMOR, INDMAR, PCM (MEFI-5/EGC OBD-M socket) cable (AM16)
- 3903502 - MARINE 8 pin rectangular VOLVO PENTA EGC- EVC cable (AM18)
- 3903560 - MARINE 4 pin SUZUKI cable (AM22)
- 3904778 - Marine MERCURY, MARINER, CUMMINS Group cable from 2010 (AM25)

### OPCIJSKI KABLOVI

- 3903689 - BIKE and MARINE power supply and adapter kit for NAVIGATOR TXC and TXTs
- 3902417 - MARINE VOLKSWAGEN, HYUNDAI, FNM cable (AM08)
- 3904048 - MARINE UNIVERSAL cable complete with pin out adapters (AM10)
- 3902659 - MARINE FTP cable (AM11)
- 3902864 - MARINE STEYR cable (AM12)
- 3902931 - MARINE YANMAR cable (AM15)
- 3904277 - MARINE CUMMINS MERCURISER DIESEL, VM (not D-Tronic), KOHLER cable (AM24A)
- 3905159 - MARINE VOLVO PENTA EGC 05/05>05/07 cable (AM26)
- 3905265 - MARINE MERCURISER/VM D-TRONIC cable (AM27)
- 3905286 - MARINE MTU-MDEC cable (AM28)
- 3905397 - MARINE CATERPILLAR-PERKINS cable (AM29)
- 3906219 - MARINE TOHATSU cable (AM30)
- 3906891 - MARINE MAN cable (AM31)
- 3907103 - MARINE STEYR cable for engines with CAN Line protocol (AM32)
- 3907642 - MARINE YANMAR CAN cable (AM33)
- 3907989 - MARINE SCANIA cable (AM36)
- 3906015 - Cable kit for diagnosis and key reprogramming BRP group SEA DOO (3151/AP43)
- 3905015 - Personal Water Craft KAWASAKI cable kit

# TEXA

DISTRIBUTER ZA HRVATSKU  
Rondo d.o.o.  
Dalmatinskih Brigada 11  
51211 Matulji, Croatia  
tel 051 275 089  
fax 051 273 567  
email : [info@rondodoo.hr](mailto:info@rondodoo.hr)

## Profesionalno rješenje za MARINE I YACHT servisere

TEHNIČKA PODRŠKA NA HRVATSKOM JEZIKU  
email : [texa.marine.support@rondodoo.hr](mailto:texa.marine.support@rondodoo.hr)



od 1997 godine s Vama

# RONDO

[www.rondodoo.hr](http://www.rondodoo.hr)



Category:

I

Inboard motors

Industrial engines / Generators

O

Outboard Motors

P

PWC (Personal Watercraft)

Jednostavan izbornik programa za dijagnostiku motora - odaberite tip , proizvođača , model motora i centralu ili skenirajte automatski sa TGS sistemom

MenuDiagnosisInboard motorsMERCURISER377 MAG MPI6200 i.e.

Diagnosis

Inboard motors

MERCURISER

377 MAG MPI

6200 i.e.

Vehicle code:

Inboard engine | -- | [--/12>]

npr .... odaberite brodski motor Mercruiser model 377 MAG MPI oznaka motora 6200 te odabiremo godinu od 2012 godine na dalje

## TGS - sustav automtske detekcije

Self-diagnosis

Global system scan

TGS

Global Scan

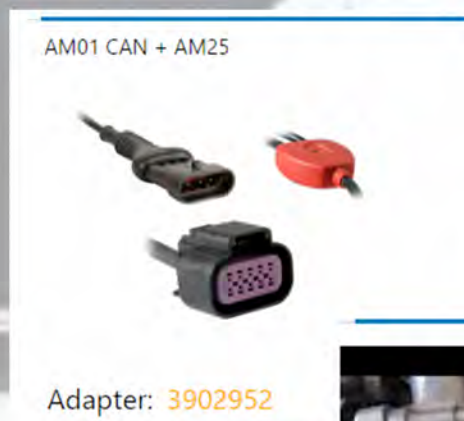
Diagnosis by system

Lever and helm control module

Petrol injection

Thrust vector control module

Odabiremo centrale koje želimo dijagnosticirati sa klikom miša



program Vam prikaže sliku i model kabela te VIDEO upute gdje se konektor nalazi



0:00 / 0:14

kratke upute o načinima spajanja te razlikama u načinima spajanja na centrale

## odaberite način spajanja na centralu .....

Lever and helm control module

Petrol injection

Visteon - PCM 09 - [-- / 12>] - With connection on OBD-M

START

Visteon - PCM 09 - [-- / 12>] - With connection on TERMINATOR node

START

Visteon - PCM 09 - [-- / 12>] - With connection on junction box open node

START

Thrust vector control module

puno informacija o svim načinima komunikacije i spajanja na pojedine komponente

Connection on TERMINATOR node

The TERMINATOR node is the CAN node with the yellow cap (fig.1) containing the network termination resistor. This is to be found directly on the engine's terminal wiring harness (fig. 2) or on a JUNCTION BOX node (fig. 3). To run diagnostics via this connection, **with the key set to OFF**, remove the TERMINATOR cap, connect the tester and select IDC4 with the note "With connection to TERMINATOR node".

With connection to JUNCTION BOX open node

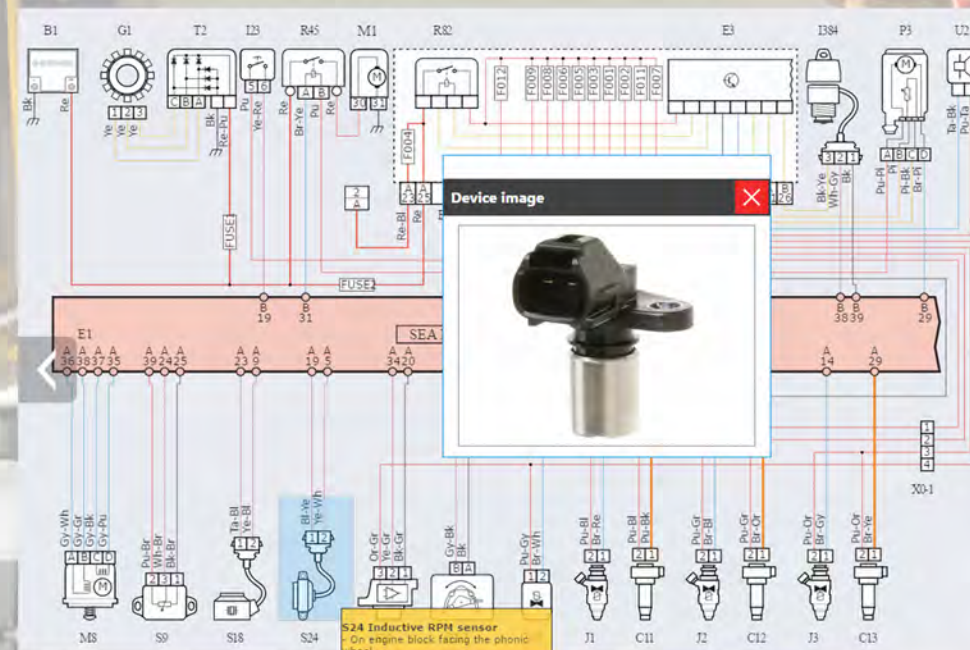
A JUNCTION BOX open node is an unused node (fig. 4) on one of the JUNCTION BOXES on the vessel's wiring harness. It is best to use the JUNCTION BOX closest to the engine, for a more reliable connection. To run diagnostics on this connection, select IDC4 with the note "with connection to junction box open node".



Fig. 1 - TERMINATOR connector cap



Fig. 4 - Unused junction box node



TEXA MARINE je riješila i najbitniju komponentu za podršku profesionalnim serviserima

- električne sheme sa svim relevantnim informacijama, slikama, karakteristikama

... sve žice su označene sa BOJAMA, pinovi na centrali i oznake žica izuzetno ubrzavaju posao servisera

... također TEXA MARINE program Vas vodi kroz procedure koje morate obaviti ili jednostavno Vam pojašnjava sve komponente koje su bitne za servisiranje i korištenje

u slučaju na slici program Vam pojašnjava funkcije upravljača te način na koji upravljač radi

tako jednostavno.....

The throttle lever **switches** unit is integrated into the control lever, and includes:

- Engine start/stop switch (**START/STOP**)
- Neutral switch for warming the engine (**THROTTLE ONLY**)
- Stern drive adjustment switch (**TRIM**)
- Throttle lever release switch (some version only)

The button signals are sent to the remote control control unit.



(Fig.1)

**NOTE:** Vessels equipped with this type of control lever have a motor control switches unit on the helm.

PARAMETERS	FAULTS
<div></div>	<div></div>
<div></div>	<div></div>
<div></div>	<div></div>
<div></div>	<div></div>
<div></div>	<div></div>
<div></div>	<div></div>
<div></div>	<div></div>

PARAMETERS 1/13	FAULTS	STATUS	ECU INFO	ACTIVATIONS
Throttle position calibrated				0.00 % 0.00 0.00
Battery voltage				12.30 V 12.30 12.30
Lever 1 position related to the potentiometer supply				0.00 V 0.00 0.00
Lever 2 position related to the potentiometer power supply				0.00 V 0.00 0.00
Lever potentiometer supply				1.31 V 1.31 1.31
Power supply in EVC (E) bus input				5.85 V 5.85 5.85
Key supply				7.32 V 7.32 7.32
Instrument panel power				14.65 V 14.65 14.65

čitanje i brisanje grešaka na svim centralama aktivacije komponenti čitanja statusa komponente

čitanje parametara trenutnih i vrijednosti koje su predviđene za komponent- trenutne vrijednosti su označene CRNO dok predviđene vrijednosti su ZELENE i CRVENE vrijednsoti