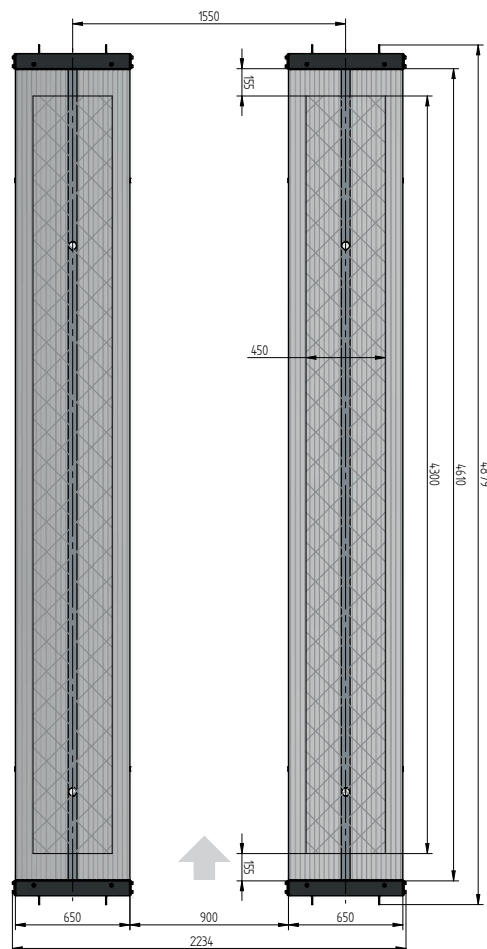
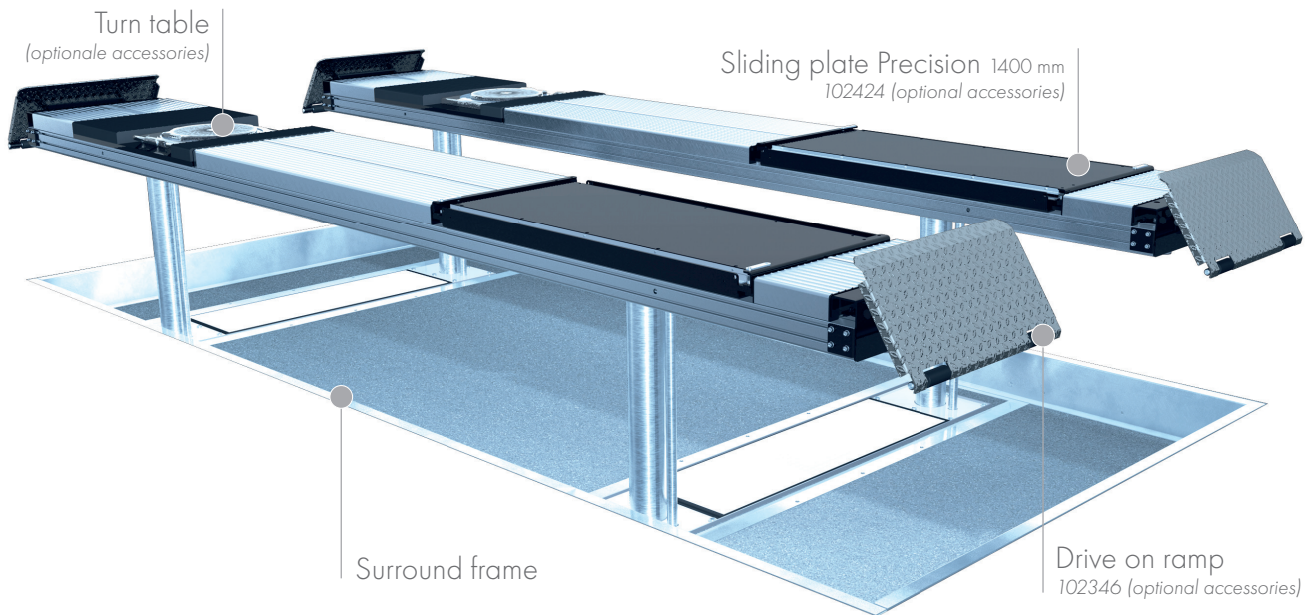


FLUSH MOUNTED



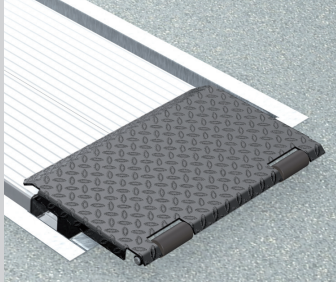
TECHNICAL DATA

capacity	4000 kg
platform length	4800 mm
platform height	180 mm
piston diameter	123 mm
piston distance	1550 mm
motor output	3,0 kW
power connector	400 V/16 A
cable length to control	11 m
lifting time	≈ 35 sec.
lowering time	≈ 35 sec.

Platform support Alu Track 4.40 with platform notches for turn tables and sliding plates	108608
Platform support Alu Track 4.40 with platform notches for joint play tester	108607
Platform support Alu Track 4.40	108606
Installation cassettes STEEL 1550 mm	2420XX
Installation cassettes STEEL 1550 mm galvanized	2421XX
Lifting unit oil 4,0 t 1550 mm - K pre-assembled in installation cassette	111607
Lifting unit oil 4,0 t 1550 mm - H packed in wooden box	111608
Surround frame Rectangle 4-piston 4800 mm	108611

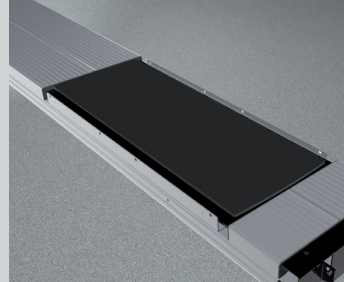
ALU TRACK 4.40

ACCESSORIES



Drive on ramp

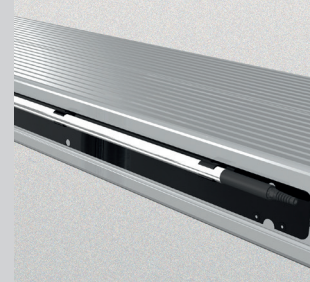
102346



Sliding plate

Precision 1400 mm

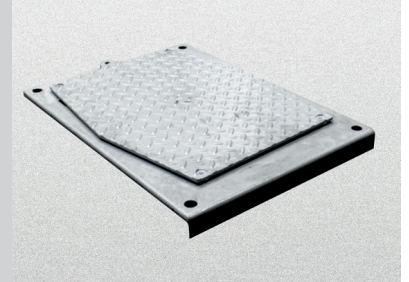
102424



Lighting

LED

111598



Joint play tester

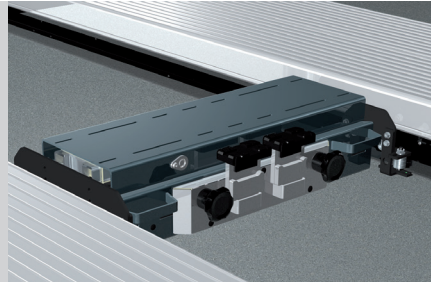
108613



Slide rail

4800 mm

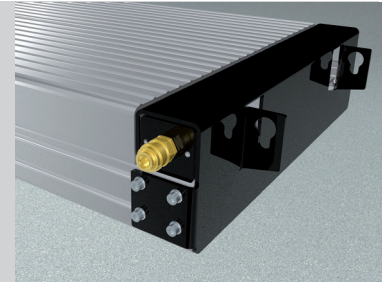
102375



Axle lifter 2600 kg

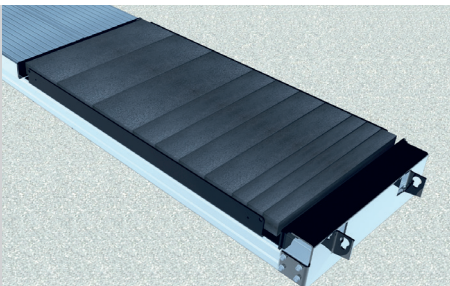
pneumatic, without slide rails

105063



Compressed air supply

102407



Rubber elements

50 mm 100 mm 200 mm

111677

111678

111679

Herrmann AG

Bahnhofstrasse 32

D-93483 Pöding

+49 (0)9461/91388 50

sales@herrmann-lifts.com

www.herrmann-lifts.com