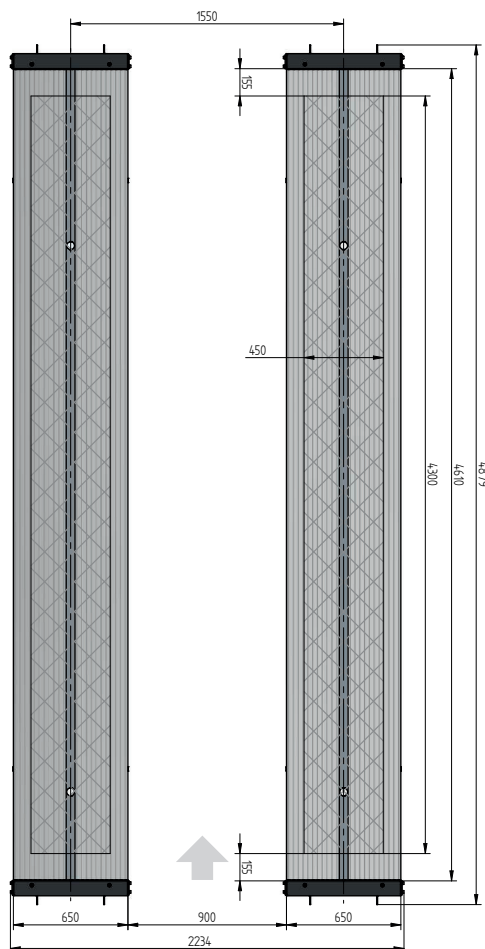
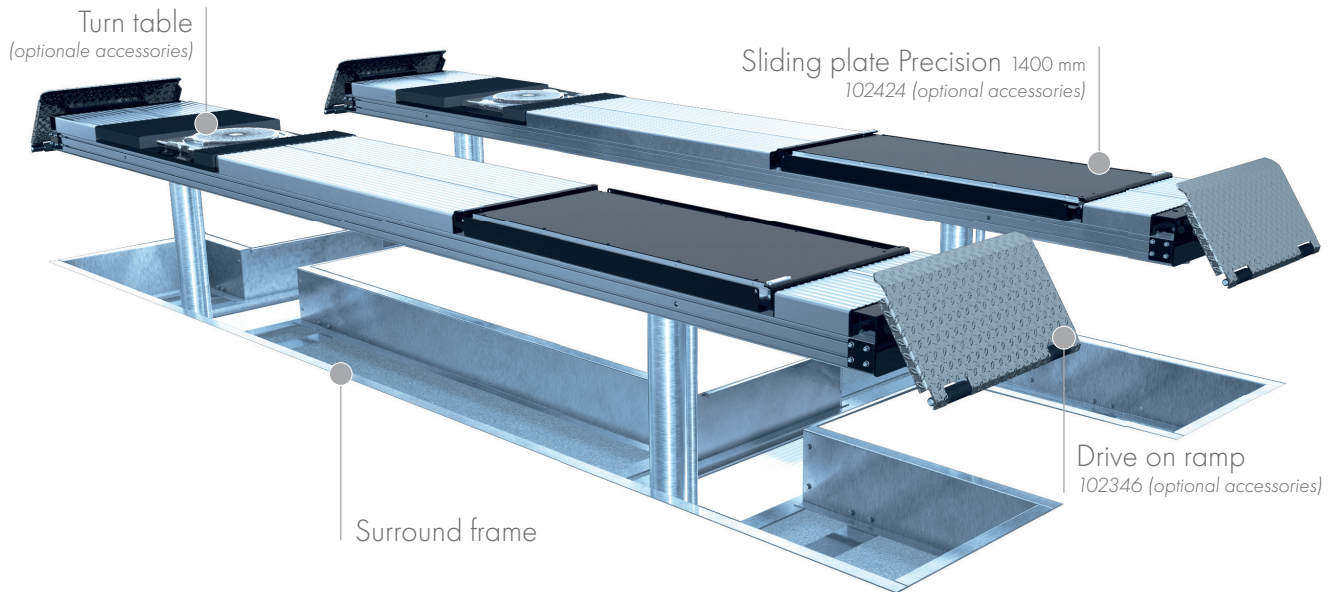


## FLUSH MOUNTED



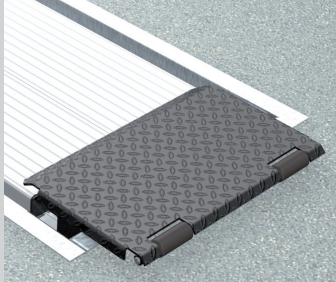
## TECHNICAL DATA

capacity	4000 kg
platform length	4800 mm
platform height	180 mm
piston diameter	123 mm
piston distance	1550 mm
motor output	3,0 kW
power connector	400 V/16 A
cable length to control	11 m
lifting time	≈ 35 sec.
lowering time	≈ 35 sec.

Platform support Alu Track 4.40 with platform notches for turn tables and sliding plates	108608
Platform support Alu Track 4.40 with platform notches for joint play tester	108607
Platform support Alu Track 4.40	108606
Installation cassettes STEEL 1550 mm	2420XX
Installation cassettes STEEL 1550 mm galvanized	2421XX
Lifting unit oil 4.0 1550 mm - K pre-assembled in installation cassette	111607
Lifting unit oil 4.0 1550 mm - H packed in wooden box	111608
Surround frame H 2-piston 4400 mm	102356

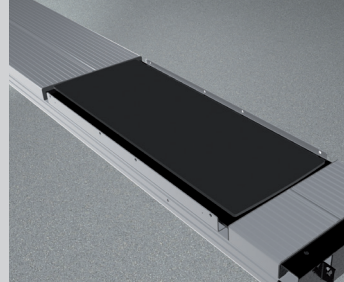
# ALU TRACK 4.40

## ACCESSORIES



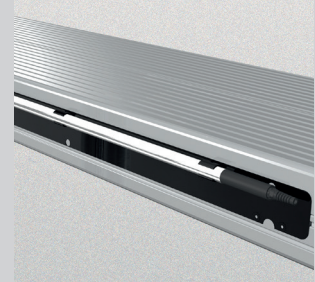
Drive on ramp

102346



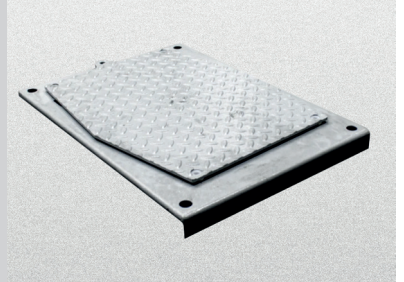
Sliding plate

Precision 1400 mm  
102424



Lighting

LED  
111598



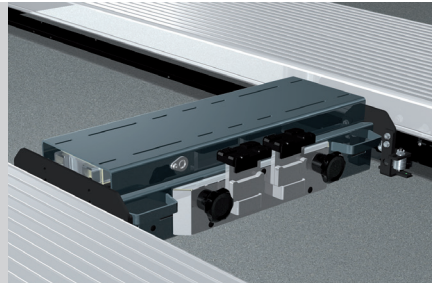
Joint play tester

108613



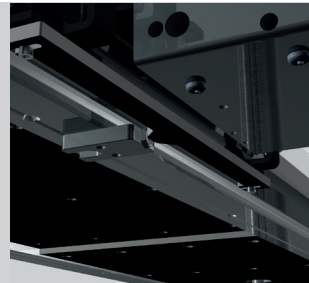
Slide rail

4800 mm  
102375



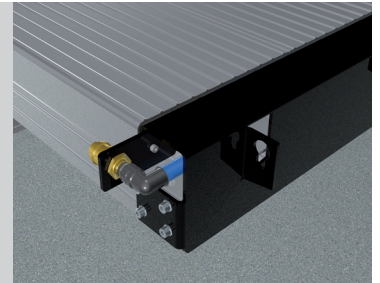
Axle lifter 2600 kg  
pneumatic, without slide rails

105063



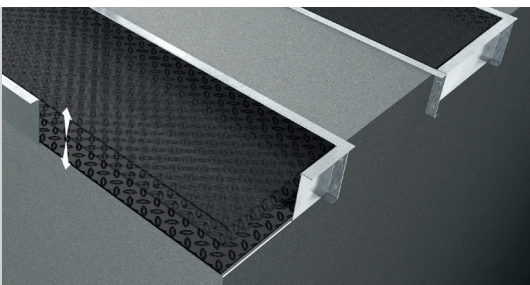
Position sensor  
for axle lifter

102456



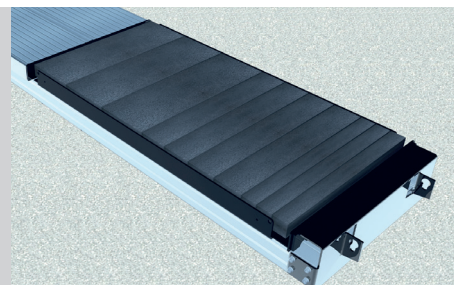
Compressed air supply

105617



Autom. floor levelling system

4-piston 4800 mm  
108612



Rubber elements

50 mm 100 mm 200 mm  
111677 111678 111679

**Herrmann AG**  
Bahnhofstrasse 32  
D-93483 Pöding

+49 (0)9461/91388 50  
sales@herrmann-lifts.com  
www.herrmann-lifts.com