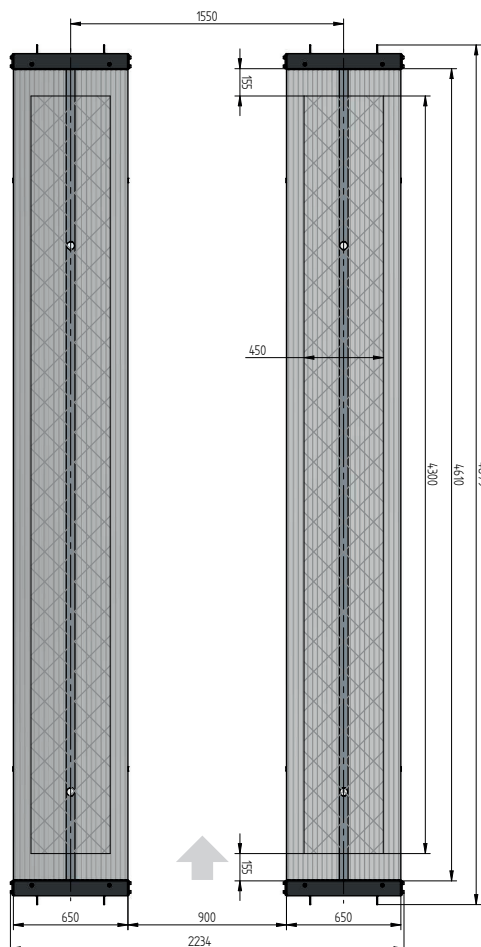
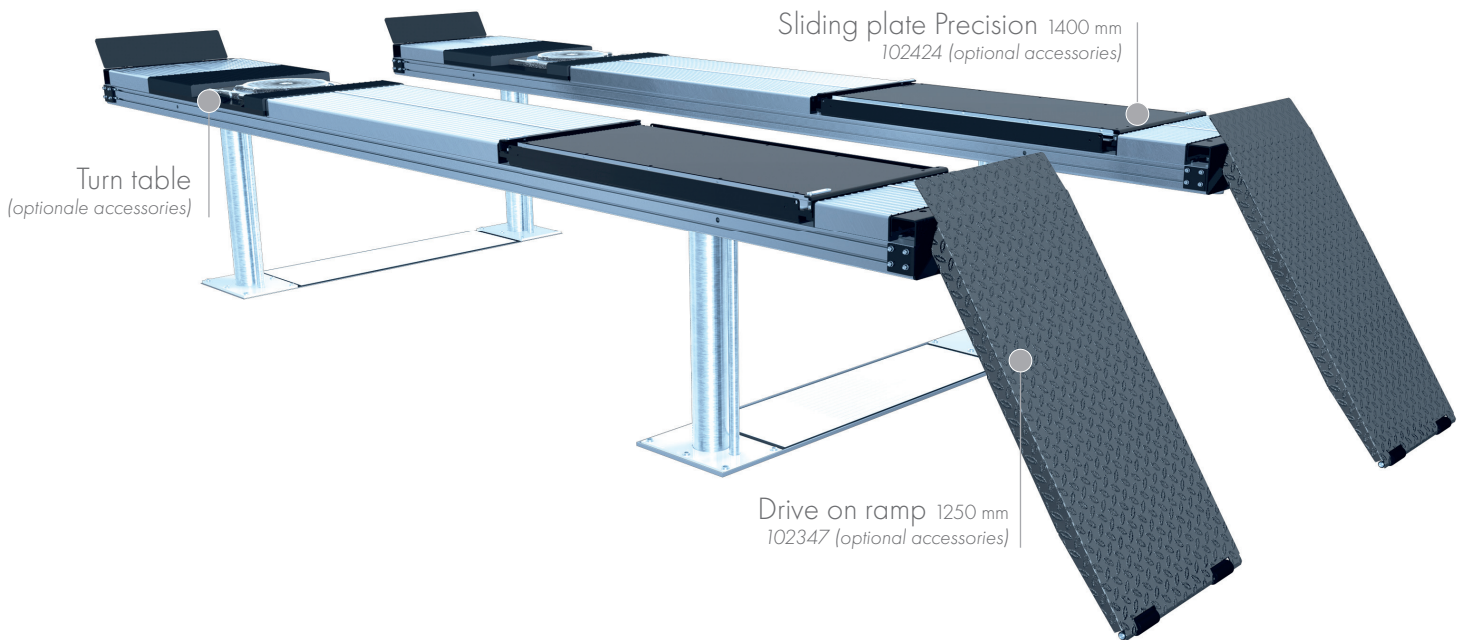


## SURFACE MOUNTED



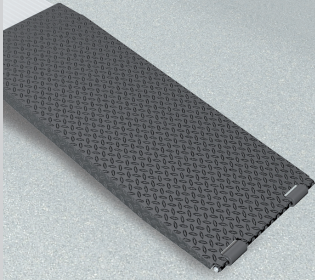
## TECHNICAL DATA

capacity	4000 kg
effect. raise height	2008 mm
platform length	4800 mm
platform height	180 mm
piston diameter	123 mm
piston distance	1550 mm
installation depth	2443 mm
motor output	3,0 kW
power connector	400 V/16 A
cable length to control	11 m
lifting time	≈ 35 sec.
lowering time	≈ 35 sec.

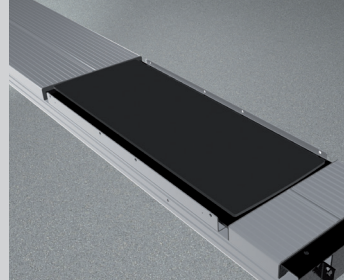
Platform support Alu Track 4.40 with platform notches for turn tables and sliding plates	108608
Platform support Alu Track 4.40 with platform notches for joint play lester	108607
Platform support Alu Track 4.40	108606
Installation cassettes STEEL 1550 mm	2420XX
Installation cassettes STEEL 1550 mm galvanized	2421XX
Lifting unit oil 4,0 l 1550 mm - K pre-assembled in installation cassette	111607
Lifting unit oil 4,0 l 1550 mm - H packed in wooden box	111608

# ALU TRACK 4.40

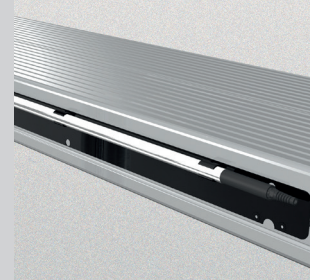
## ACCESSORIES



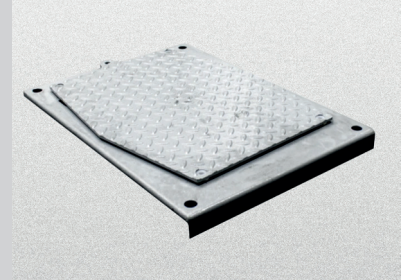
Drive on ramp  
1250 mm  
102347



Sliding plate  
Precision 1400 mm  
102424



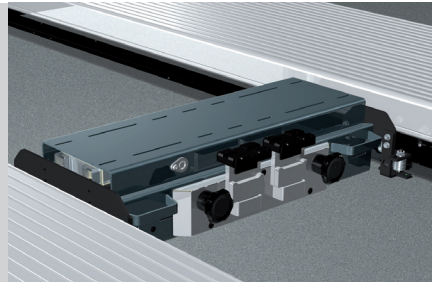
Lighting  
LED  
111598



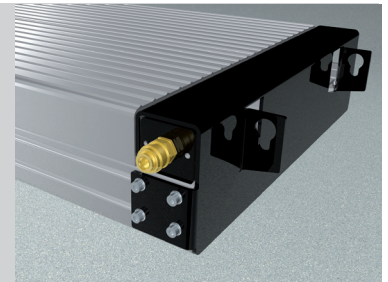
Joint play tester  
108613



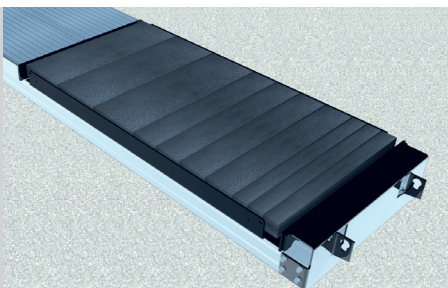
Slide rail  
4800 mm  
102375



Axle lifter 2600 kg  
pneumatic, without slide rails  
105063



Compressed air supply  
102407



Rubber elements  
50 mm    100 mm    200 mm  
111677    111678    111679

**Herrmann AG**  
Bahnhofstrasse 32  
D-93483 Pöding

+49 (0)9461/91388 50  
sales@herrmann-lifts.com  
www.herrmann-lifts.com