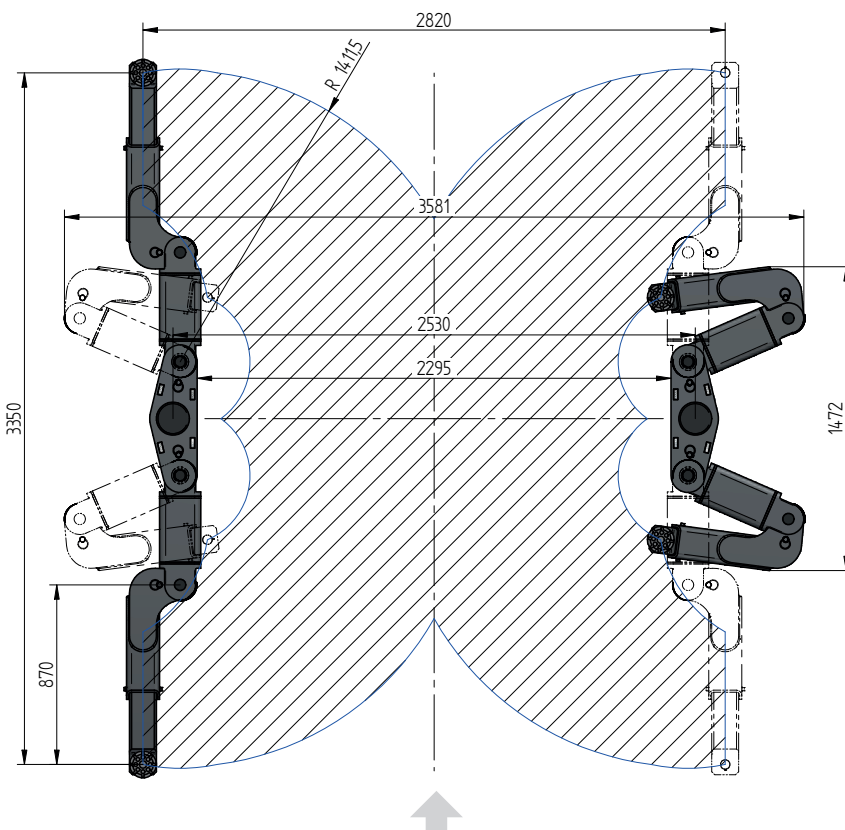


SURFACE MOUNTED

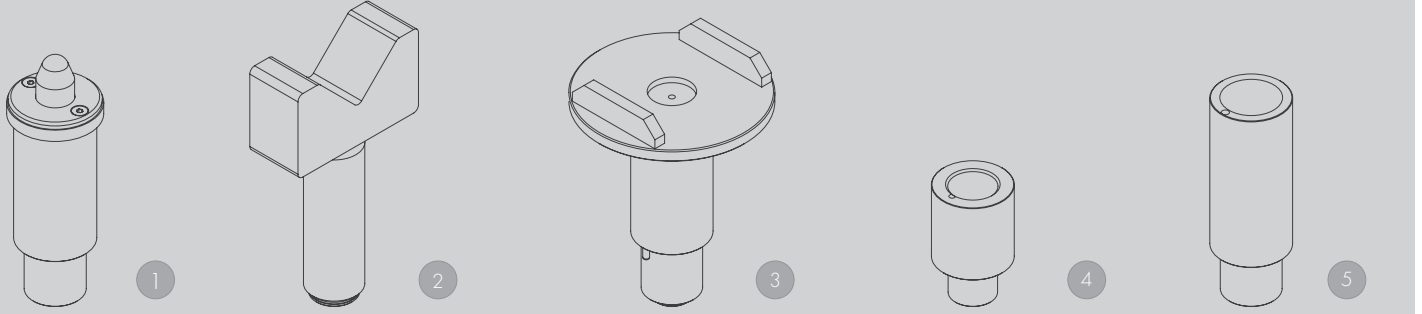


TECHNICAL DATA

Capacity	4000 kg
Effective raise height	2033 mm
Drive over height	96 mm
Piston diameter	123 mm
Piston distance	2530 mm
Installation depth	2408 mm
Motor output	3,0 kW
Power connector	400 V/16 A
Cable length to control	11 m
Lifting time	≈ 35 sec.
Lowering time	≈ 35 sec.

Support Multiarm 2.40	107022
Installation cassette STEEL 2530 mm	2330XX
Installation cassette STEEL 2530 mm galvanized	2331XX
Lifting unit oil 4,0 x 2530 mm - K pre-assembled in installation cassette	111618
Lifting unit oil 4,0 x 2530 mm - H packed in wooden box	111619

ACCESSORIES



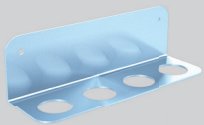
1 Stacking adapter NCV3
d 45 x d 70 / 125-250 mm
102290 (1 set / 2 pcs.)

2 Stacking adapter V-prism
d 45 / 182-312 mm
102289 (1 set / 2 pcs.)

3 Stacking adapter U-form
d 130 x d 45 / 193-295 mm
102288 (1 set / 4 pcs.)

4 Stacking adapter extension
80 mm
102284 (1 set / 4 pcs.)

5 Stacking adapter extension
130 mm
102287 (1 set / 4 pcs.)



Bracket for stacking-
adapter extension
111578

Herrmann AG
Bahnhofstrasse 32
D-93483 Pöding

Phone: +49 (0)9461/91388 50
E-Mail: sales@herrmann-lifts.com

www.herrmann-lifts.com