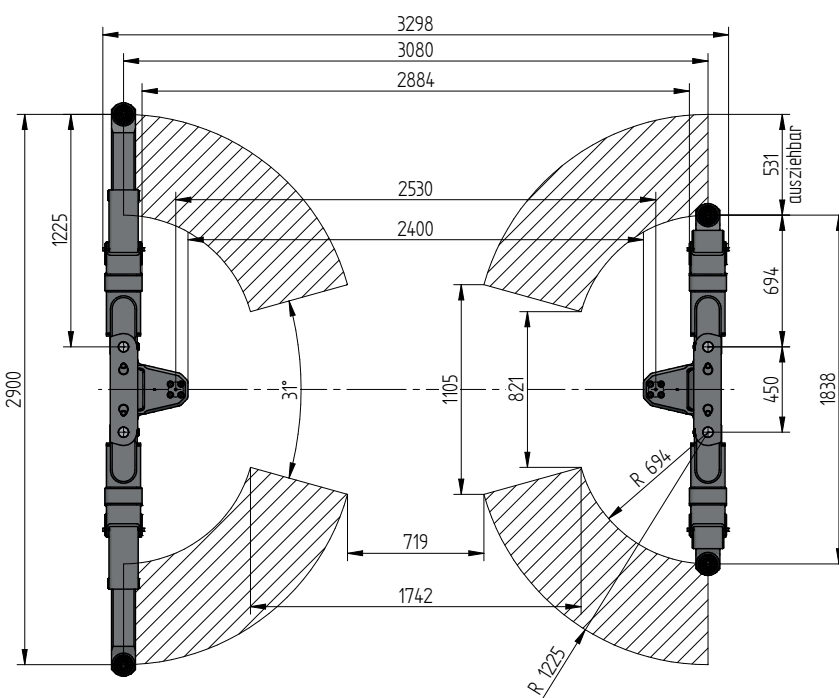


FLUSH MOUNTED



TECHNICAL DATA

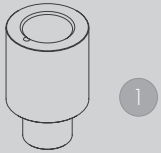
| | |
|-------------------------|------------|
| Capacity | 3500 kg |
| Effective raise height | 2048 mm |
| Move in height | 90 mm |
| Piston diameter | 123 mm |
| Piston distance | 2530 mm |
| Installation depth | 2408 mm |
| Motor output | 3,0 kW |
| Power connector | 400 V/16 A |
| Cable length to control | 11 m |
| Lifting time | ≈ 35 sec. |
| Lowering time | ≈ 35 sec. |

| | |
|--|--------|
| Support Swingarm 2.35 | 109229 |
| Installation cassette STEEL 2530 mm | 2020XX |
| Installation cassette STEEL 2530 mm galvanized | 2021XX |
| Lifting unit oil 3,5 + 2530 mm - K pre-assembled in installation cassette | 110114 |
| Lifting unit oil 3,5 + 2530 mm - H packed in wooden box | 110115 |
| Surround frame Swingarm 2530 | 111549 |

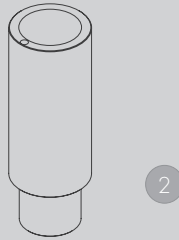


SWINGARM 2.35-2530

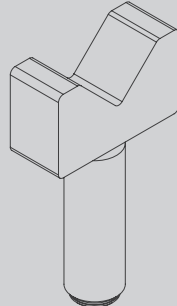
ACCESSORIES



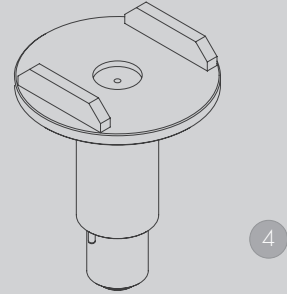
1 | Stacking adapter
extension 89 mm
d 50 x 89 mm
109679 (1 Set / 4 Pieces)



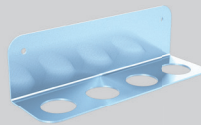
2 | Stacking adapter
extension 127 mm
d 50 x 127 mm
109680 (1 Set / 4 Pieces)



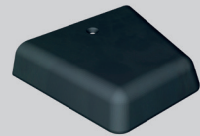
3 | Stacking adapter
V-shape
d 50 / 87 - 130 mm
109683 (1 Set / 4 Pieces)



4 | Stacking adapter
U-form
d 50
110397 (1 Set / 4 Pieces)



Bracket for stacking-
adapter extension
111578



Rim protector
110407 (1 Set / 2 Pieces)

Herrmann AG
Bahnhofstrasse 32
D-93483 Pöding

Phone: +49 (0)9461/91388 50
E-Mail: sales@herrmann-lifts.com

www.herrmann-lifts.com