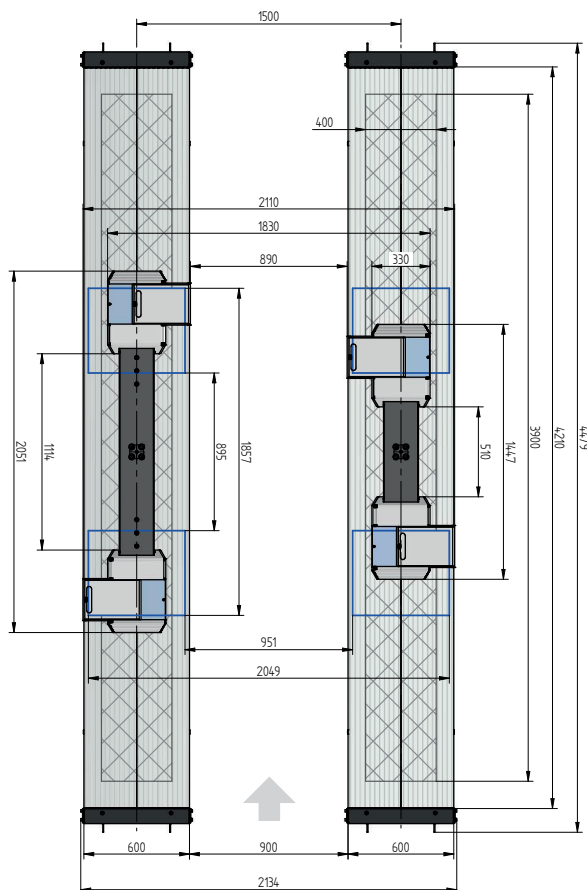
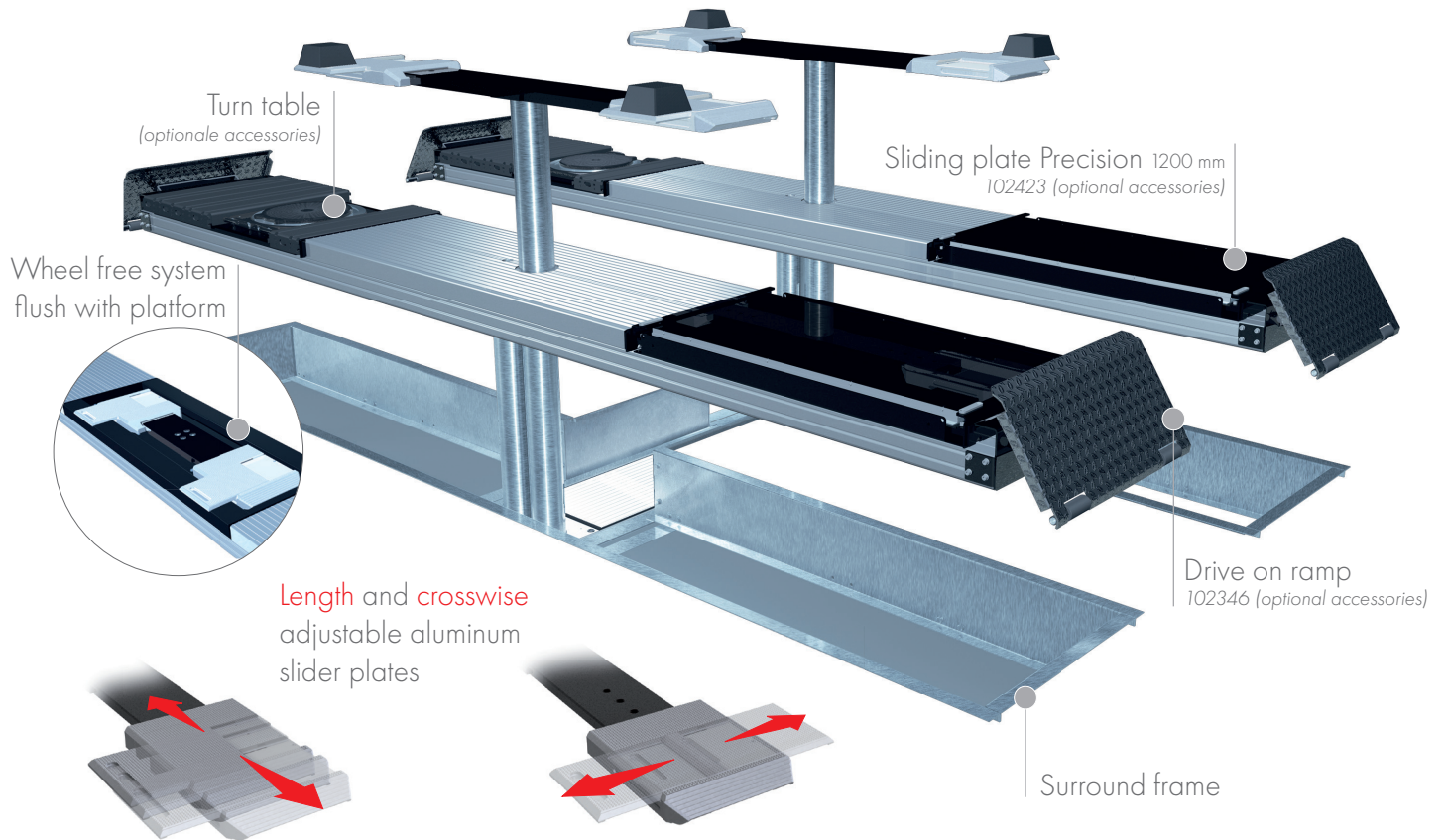


FLUSH MOUNTED



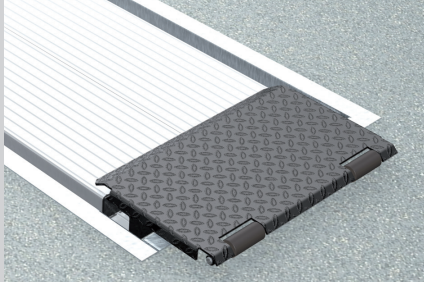
TECHNICAL DATA

capacity	3500 kg
wheel free lift	3500 kg
effect. raise height platform	2008 mm
effect. raise height wheel free unit	1982 mm
platform length	4400 mm
platform height	180 mm
drive over height wheel free unit	60 mm
piston diameter	123 mm
piston distance	1500 mm
installation depth	2443 mm
motor output	3,0 kW
power connector	400 V/16 A
cable length to control	11 m
lifting time	≈ 35 sec.
lowering time	≈ 35 sec.

Platform support Alu Track 2.35 Duplo with platform notches for turn tables and sliding plates	105244
Platform support Alu Track 2.35 Duplo with platform notches for wheel free system flush with platform, turn tables and sliding plates	108892
Platform support Alu Track 2.35 Duplo with platform notches for wheel free system flush with platform	108036
Platform support Alu Track 2.35 Duplo	105336
Support Uni 2.35 plus	102640
Installation cassette STEEL 1500 mm	2190XX
Installation cassette STEEL 1500 mm galvanized	2191XX
Lifting unit oil 3,5 t Duplo 1500 mm - K pre-assembled in installation cassette	111599
Lifting unit oil 3,5 t Duplo 1500 mm - H packed in wooden box	111600
Lifting unit oil 3,5 t Duplo 1500 mm - K for wheel free system, pre-assembled in installation cassette	111601
Lifting unit oil 3,5 t Duplo 1500 mm - H for wheel free system, packed in wooden box	111602
Surround frame H 2-piston 4400 mm	102356

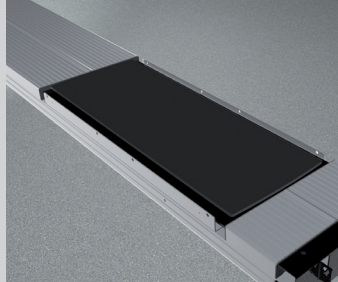
ALU TRACK 2.35 DUPLO UNI PLUS

ACCESSORIES



Drive on ramp

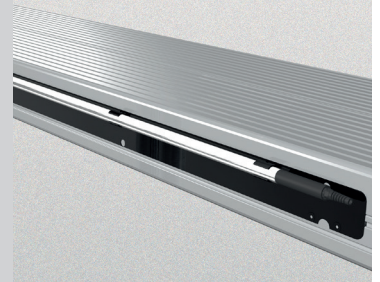
102346



Sliding plate

Precision 1200 mm

102423



Lighting
LED

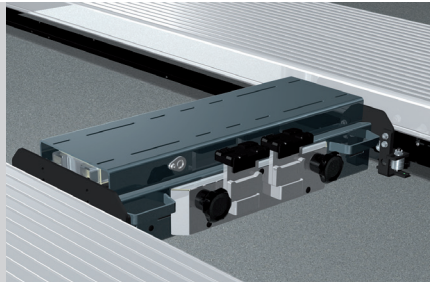
111598



Slide rail

4400 mm

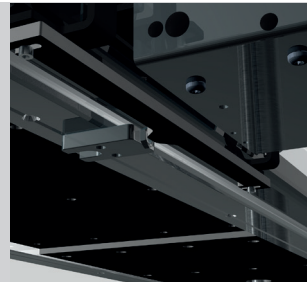
102374



Axle lifter 2600 kg

pneumatic, without slide rails

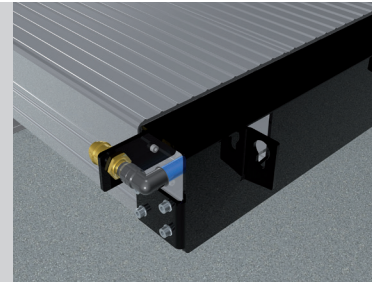
105063



Position sensor

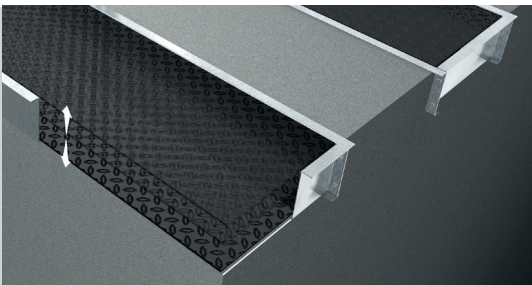
for axle lifter

102456



Compressed air supply

105617



Autom. floor levelling system

2-piston Duplo 4400 mm

102363

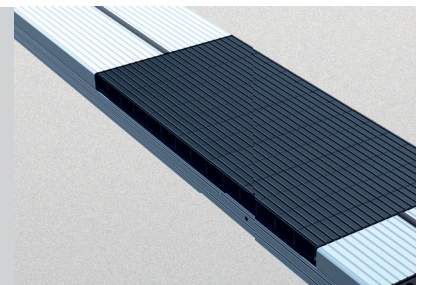


Wheel alignment supports

1350 mm 600 mm

102377

102381



Rubber elements

50 mm

100 mm

200 mm

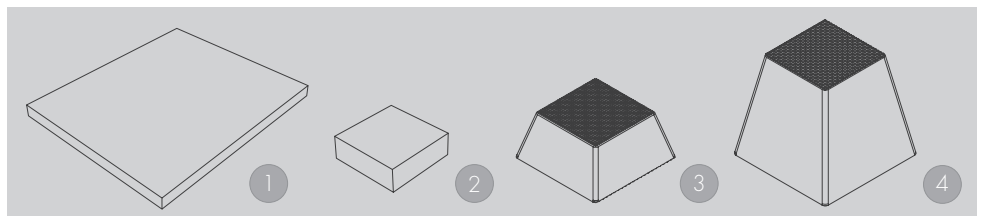
111677

111678

111679

Herrmann AG
Bahnhofstrasse 32
D-93483 Pöding

Phone: +49 (0)9461/91388 50
E-Mail: sales@herrmann-lifts.com



Rubber pads

1 | 290 x 335 x 20 mm 102275

2 | 120 x 120 x 40 mm 102274

Rubber pads Pyramid

3 | 70 mm 102273

4 | 140 mm 102291

www.herrmann-lifts.com

Amendments and mistakes reserved. All illustrations are not binding.

we lift cars