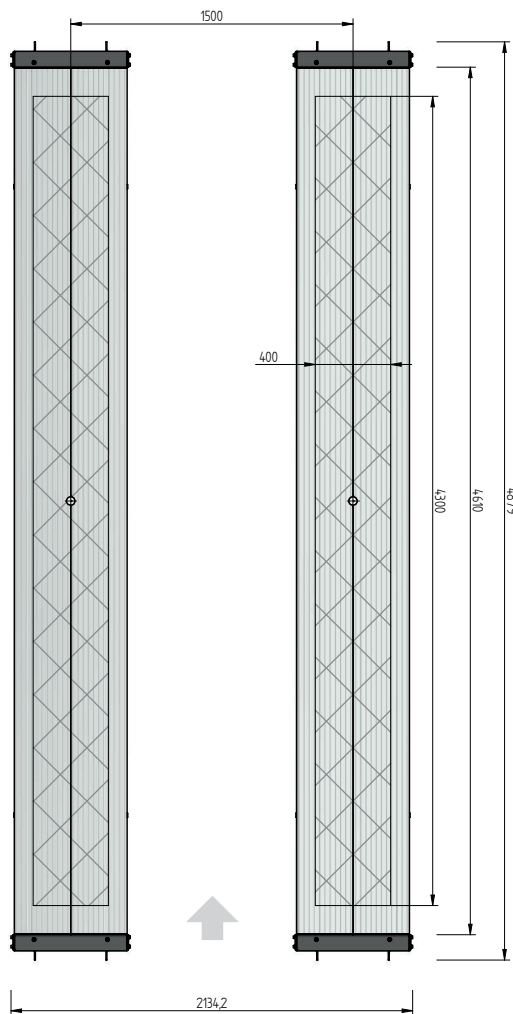
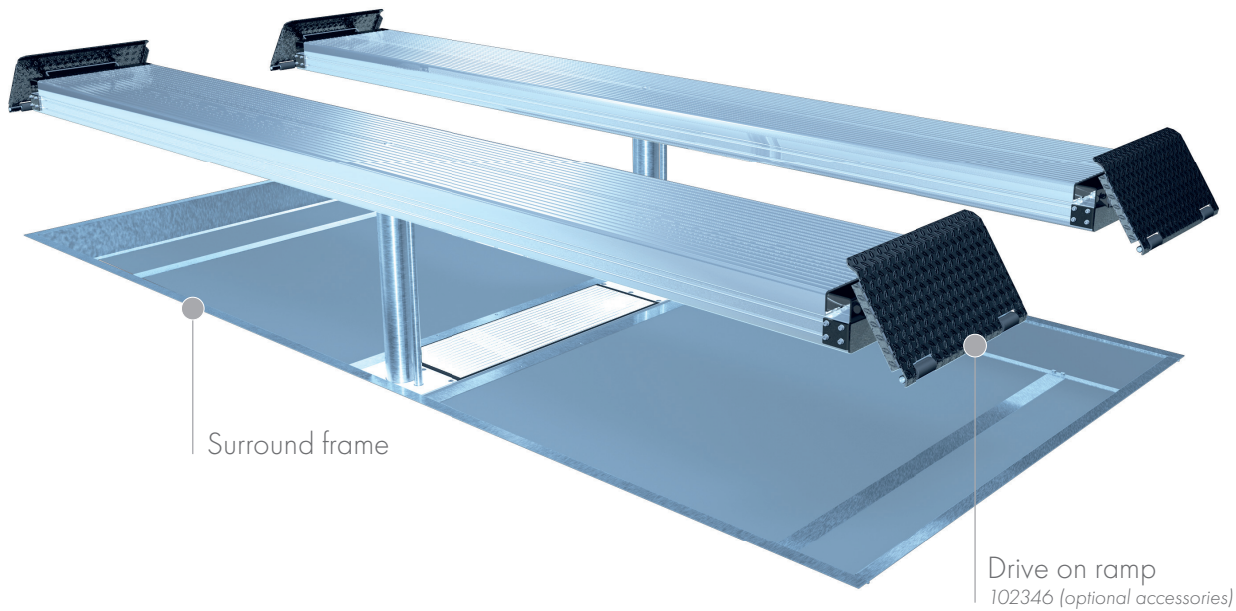


FLUSH MOUNTED



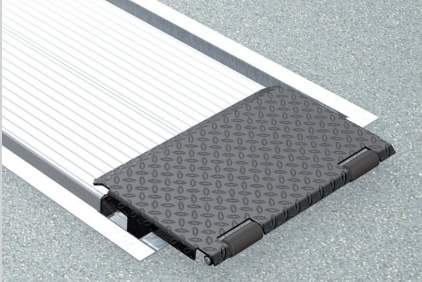
TECHNICAL DATA

| | |
|-------------------------|------------|
| capacity | 5000 kg |
| effect. raise height | 2019 mm |
| platform length | 4800 mm |
| platform height | 180 mm |
| piston diameter | 123 mm |
| piston distance | 1500 mm |
| installation depth | 2443 mm |
| motor output | 3,0 kW |
| power connector | 400 V/16 A |
| cable length to control | 11 m |
| lifting time | ≈ 35 sec. |
| lowering time | ≈ 35 sec. |

| | |
|--|--------|
| Platform support Alu Track 2.50 | 104980 |
| Installation cassettes STEEL 1500 mm | 2030XX |
| Installation cassettes STEEL 1500 mm galvanized | 2031XX |
| Lifting unit oil 5,0 t 1500 mm - K pre-assembled in installation cassette | 110204 |
| Lifting unit oil 5,0 t 1500 mm - H packed in wooden box | 110205 |
| Surround frame Rectangle 2-piston 4800 mm | 106187 |

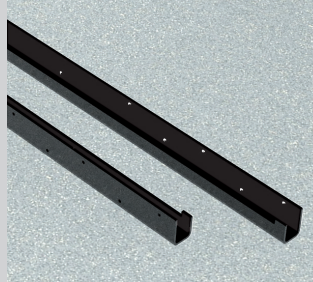
ALU TRACK 2.50

ACCESSORIES



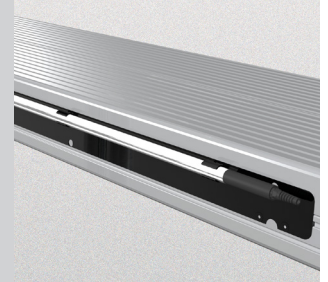
Drive on ramp

102346



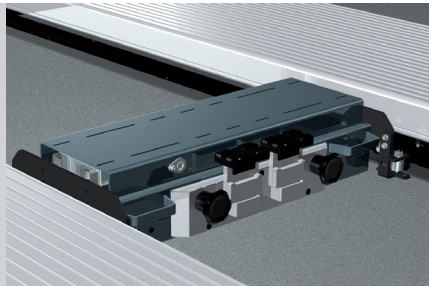
Slide rail

4800 mm
102375



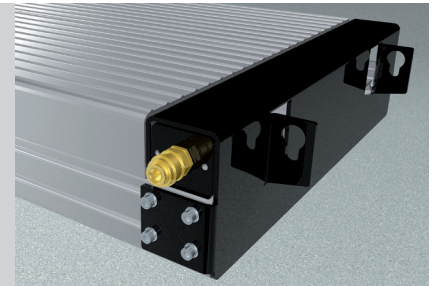
Lighting
LED

102394



Axle lifter 2600 kg
pneumatic, without slide rails

105063



Compressed air supply

102407

Herrmann AG
Bahnhofstrasse 32
D-93483 Pöding

Phone: +49 (0)9461/91388 50
E-Mail: sales@herrmann-lifts.com

www.herrmann-lifts.com

Amendments and mistakes reserved. All illustrations are not binding.

we lift cars