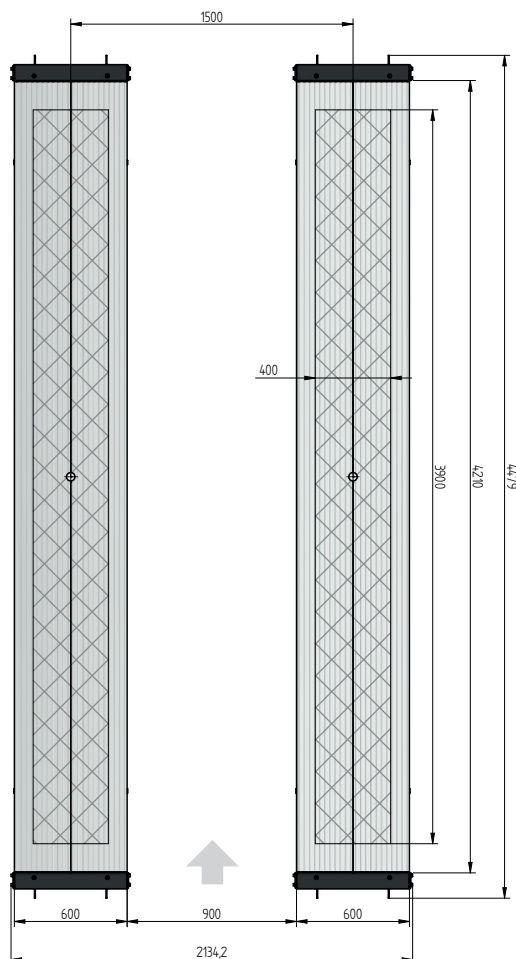
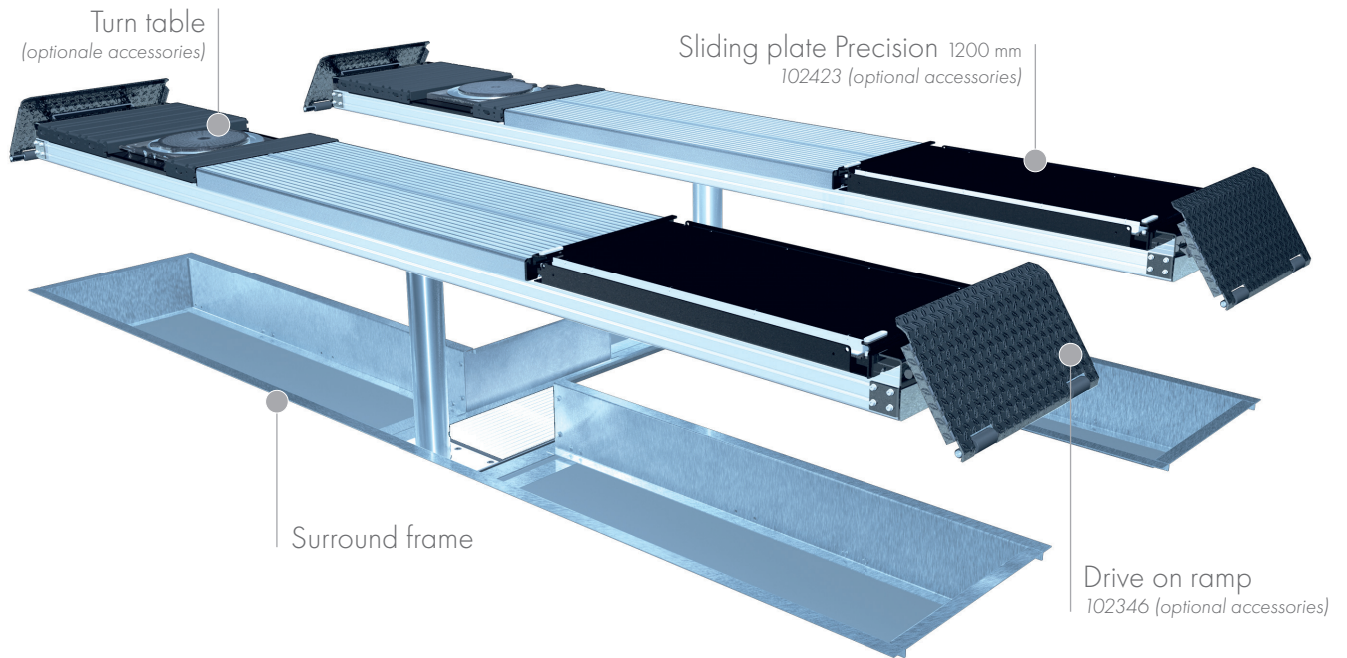


FLUSH MOUNTED



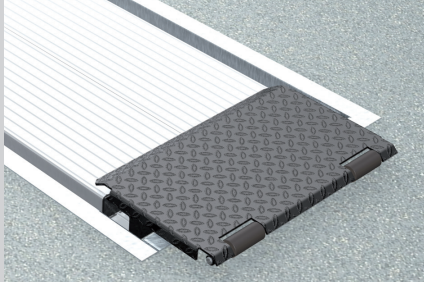
TECHNICAL DATA

| | |
|-------------------------|------------|
| capacity | 3500 kg |
| effect. raise height | 2008 mm |
| platform length | 4400 mm |
| platform height | 180 mm |
| piston diameter | 123 mm |
| piston distance | 1500 mm |
| installation depth | 2443 mm |
| motor output | 3,0 kW |
| power connector | 400 V/16 A |
| cable length to control | 11 m |
| lifting time | ≈ 35 sec. |
| lowering time | ≈ 35 sec. |

| | |
|---|--------|
| Platform support Alu Track 2.35 with platform notches for turn tables and sliding plates | 105238 |
| Platform support Alu Track 2.35 | 102698 |
| Installation cassettes STEEL 1500 mm | 2030XX |
| Installation cassettes STEEL 1500 mm galvanized | 2031XX |
| Lifting unit oil 3,5 t 1500 mm - K pre-assembled in installation cassette | 110200 |
| Lifting unit oil 3,5 t 1500 mm - H packed in wooden box | 110201 |
| Surround frame H 2-piston 4400 mm | 102356 |

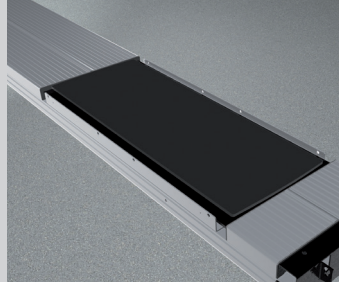
ALU TRACK 2.35

ACCESSORIES



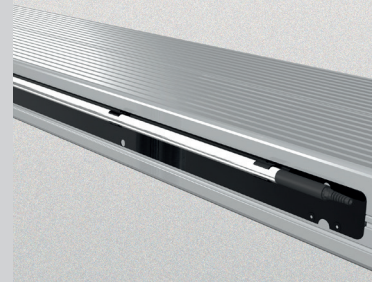
Drive on ramp

102346



Sliding plate

Precision 1200 mm
102423



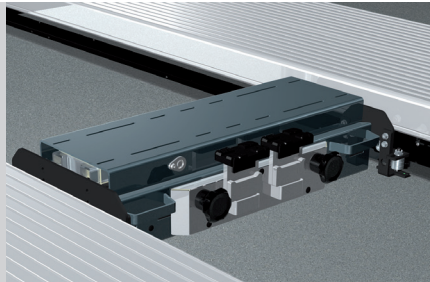
Lighting

LED
102394

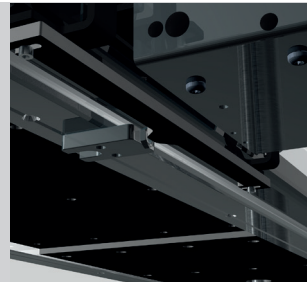


Slide rail

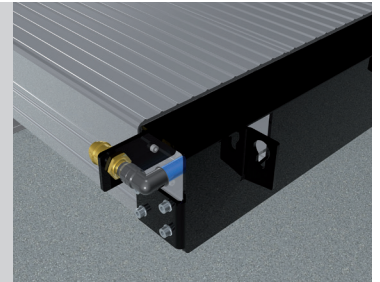
4400 mm
102374



Axle lifter 2600 kg
pneumatic, without slide rails
105063

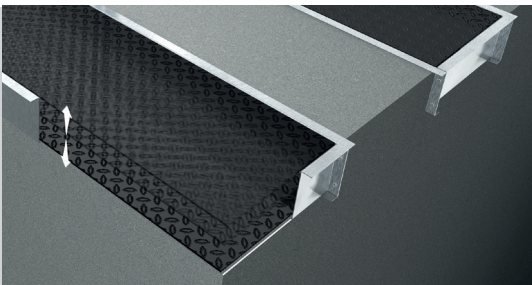


Position sensor
for axle lifter
102456



Compressed air supply

105617



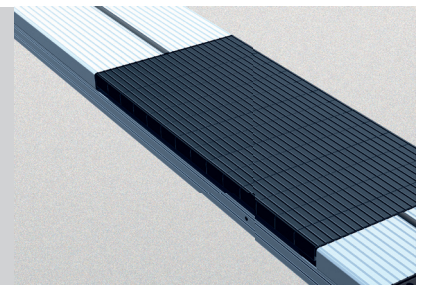
Autom. floor levelling system

2-piston 4400 mm
102366



Wheel alignment supports

1350 mm 600 mm
102377 102381



Rubber elements

50 mm 100 mm 200 mm
111677 111678 111679

Herrmann AG
Bahnhofstrasse 32
D-93483 Pöding

Phone: +49 (0)9461/91388 50
E-Mail: sales@herrmann-lifts.com

www.herrmann-lifts.com

Amendments and mistakes reserved. All illustrations are not binding.

we lift cars