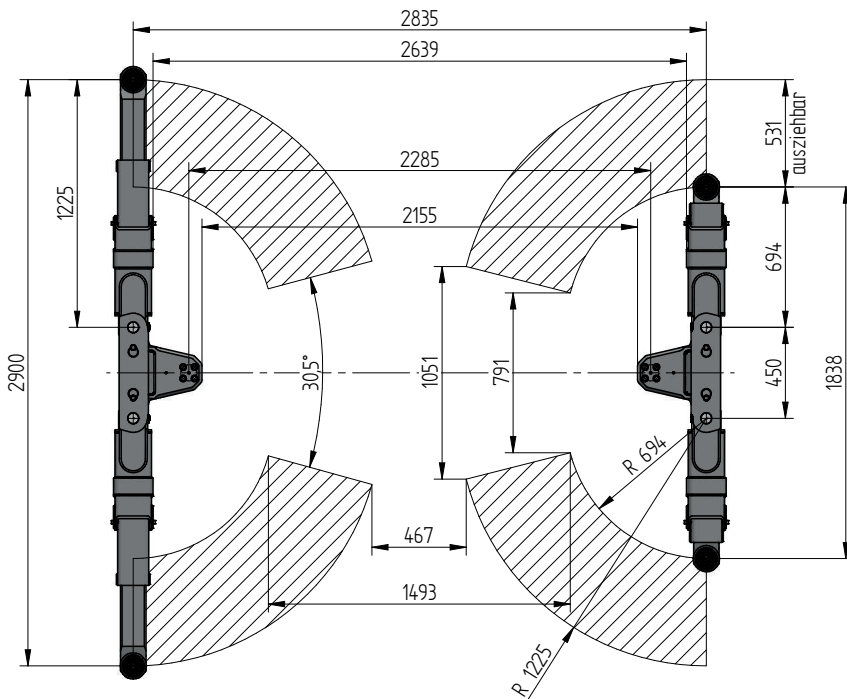
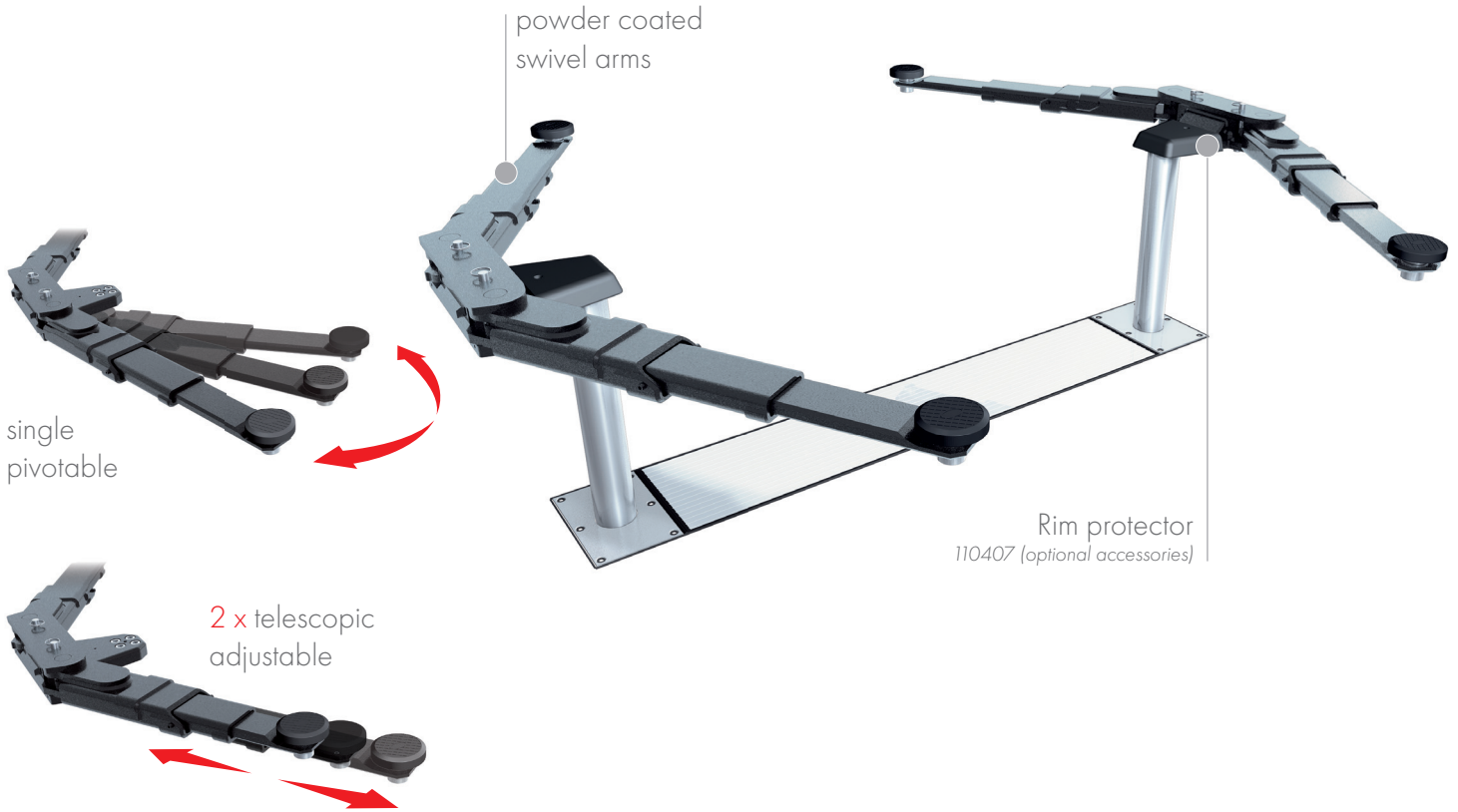


SURFACE MOUNTED



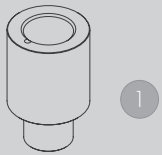
TECHNICAL DATA

Capacity	3500 kg
Effective raise height	2048 mm
Move in height	90 mm
Piston diameter	123 mm
Piston distance	2285 mm
Installation depth	2408 mm
Motor output	3,0 kW
Power connector	400 V/16 A
Cable length to control	11 m
Lifting time	≈ 35 sec.
Lowering time	≈ 35 sec.

Support Swingarm 2.35	109229
Support Swingarm 2.35 reinforced	111590
Installation cassette STEEL 2285 mm	2320XX
Installation cassette STEEL 2285 mm galvanized	2321XX
Lifting unit oil 3,5 l 2285 mm - K pre-assembled in installation cassette	109966
Lifting unit oil 3,5 l 2285 mm - H packed in wooden box	109978



ACCESSORIES



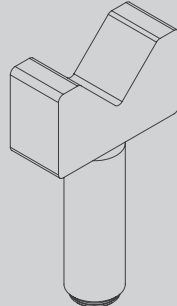
1

1 Stacking adapter extension 89 mm
d 50 x 89 mm
109679 (1 Set / 4 Pieces)



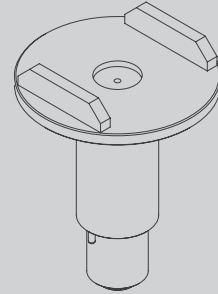
2

2 Stacking adapter extension 127 mm
d 50 x 127 mm
109680 (1 Set / 4 Pieces)



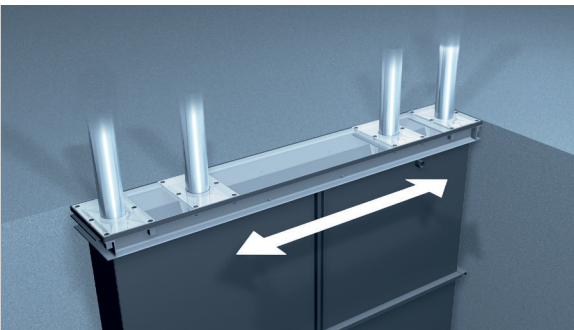
3

3 Stacking adapter V-shape
d 50 / 87 - 130 mm
109683 (1 Set / 4 Pieces)



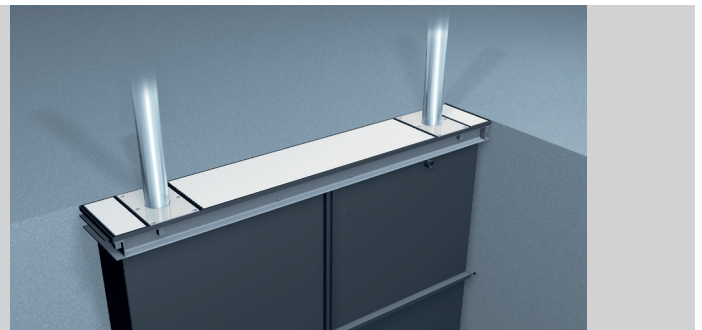
4

4 Stacking adapter U-form
d 50
110397 (1 Set / 4 Pieces)



Future Proof Installation cassette

Stell 2530 mm
Drilling pattern 2530 / 2285 / 1785 / 1500
2530XX
Steel galvanized 2530 mm
Drilling pattern 2530 / 2285 / 1785 / 1500
2531XX

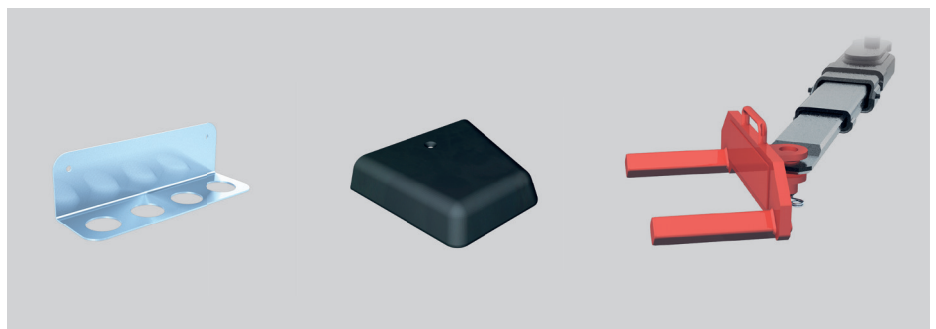


Cover kit for Future Proof Installation cassette

111315

Herrmann AG
Bahnhofstrasse 32
D-93483 Pöding

Phone: +49 (0)9461/91388 50
E-Mail: sales@herrmann-lifts.com



Bracket for stacking adapter extension

111578

Rim protector

110407 (1 Set / 2 Pieces)

Wheel lifting adapter Swingarm 2.35

111258 (1 Set / 4 Pieces)